

BURGHCLERE PARISH NEIGHBOURHOOD PLAN MODIFICATION PROPOSAL

2011 – 2029

POLICY MAP BOOKLET



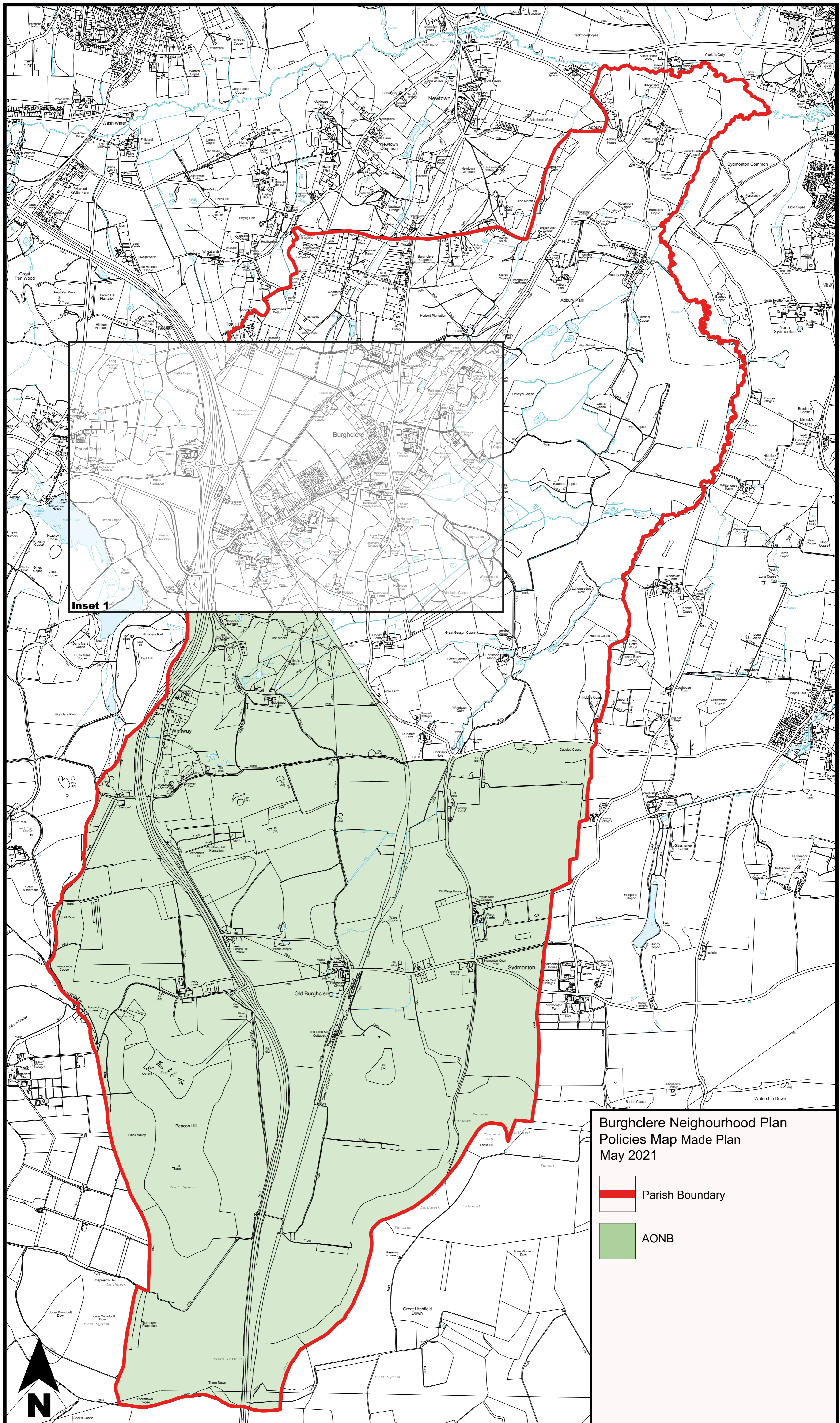
© Richard Carrow

Published by Burghclere Parish Council for Pre-Submission consultation under the Neighbourhood Planning (General) Regulations 2012 (as amended).

October 2022

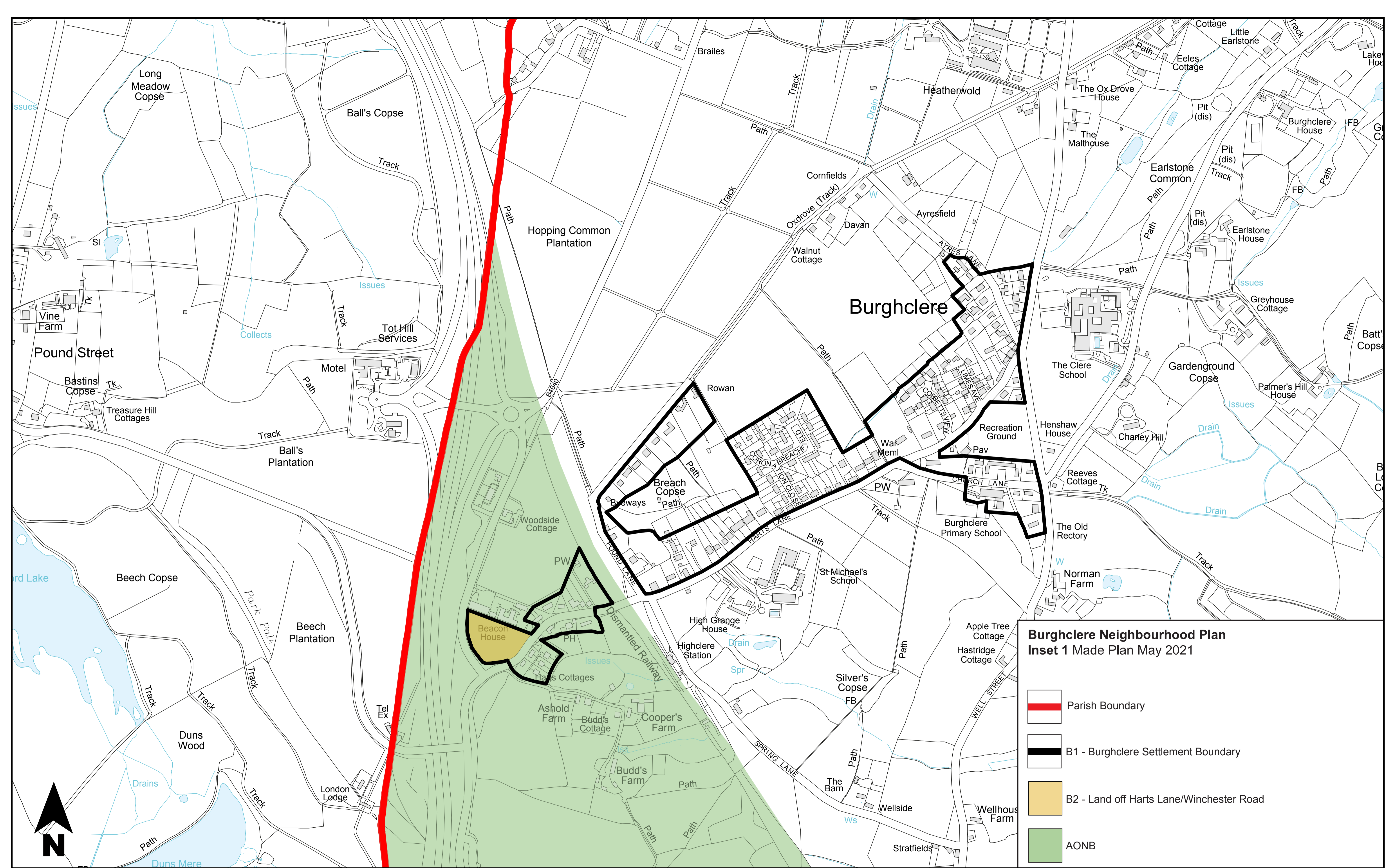


Courtesy of Lottie Baker, Burghclere Primary School

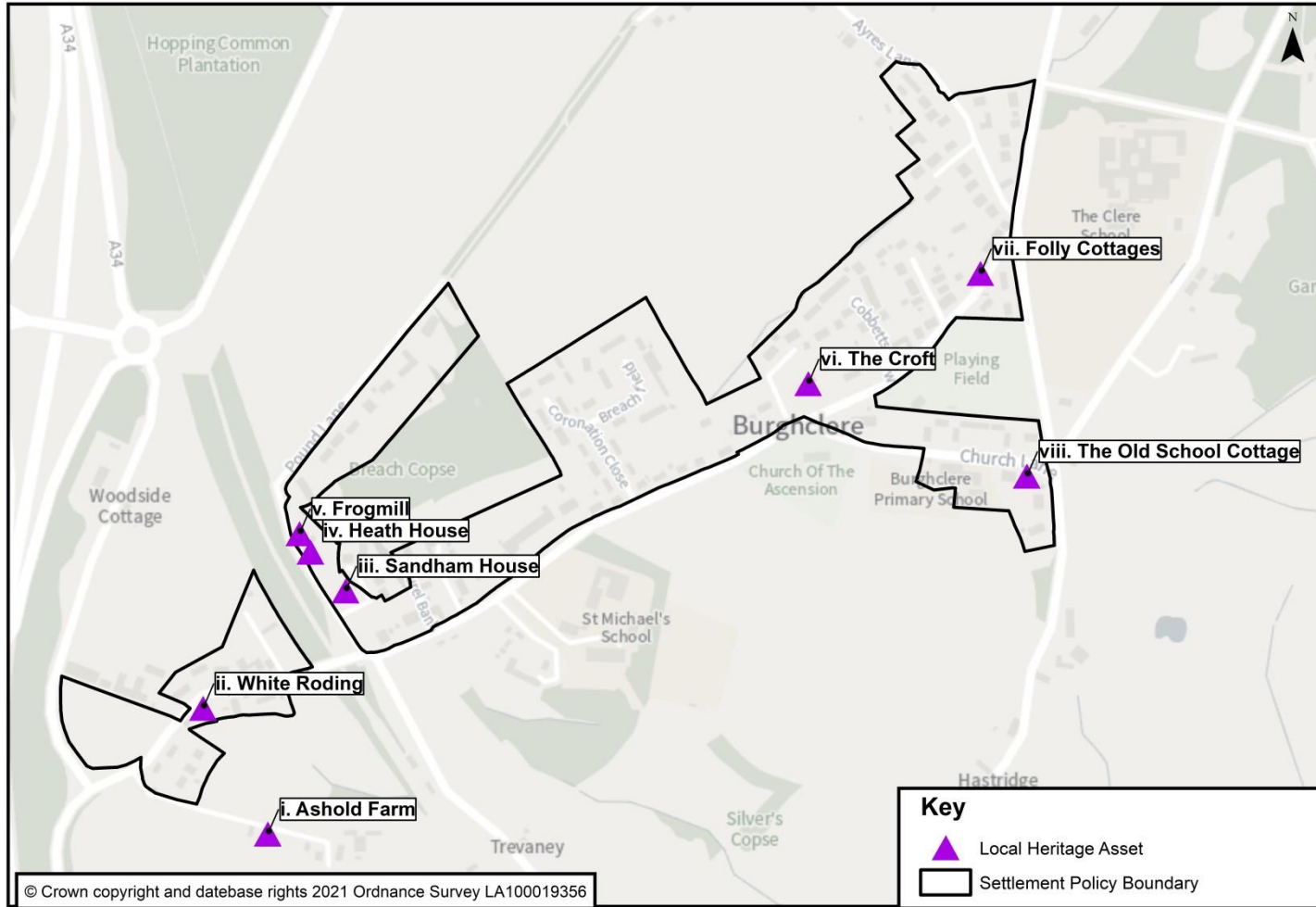


**Burghclere Neighbourhood Plan
Policies Map Made Plan
May 2021**

- Parish Boundary
- AONB

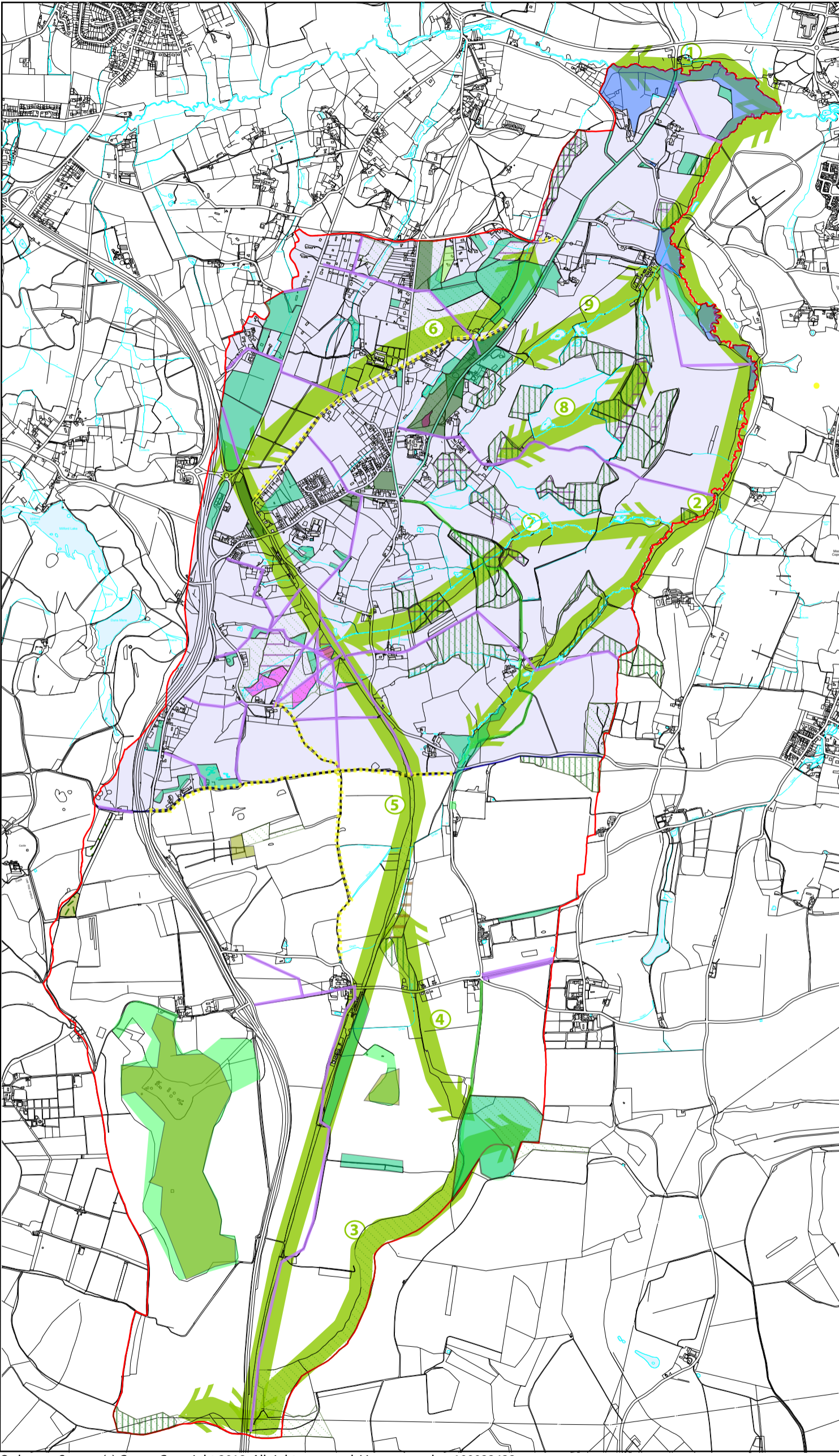


INSET MAP 2



Burghclere Village Local Heritage Assets

Burghclere Neighbourhood Plan Green and Blue Infrastructure Network



- Parish Boundary

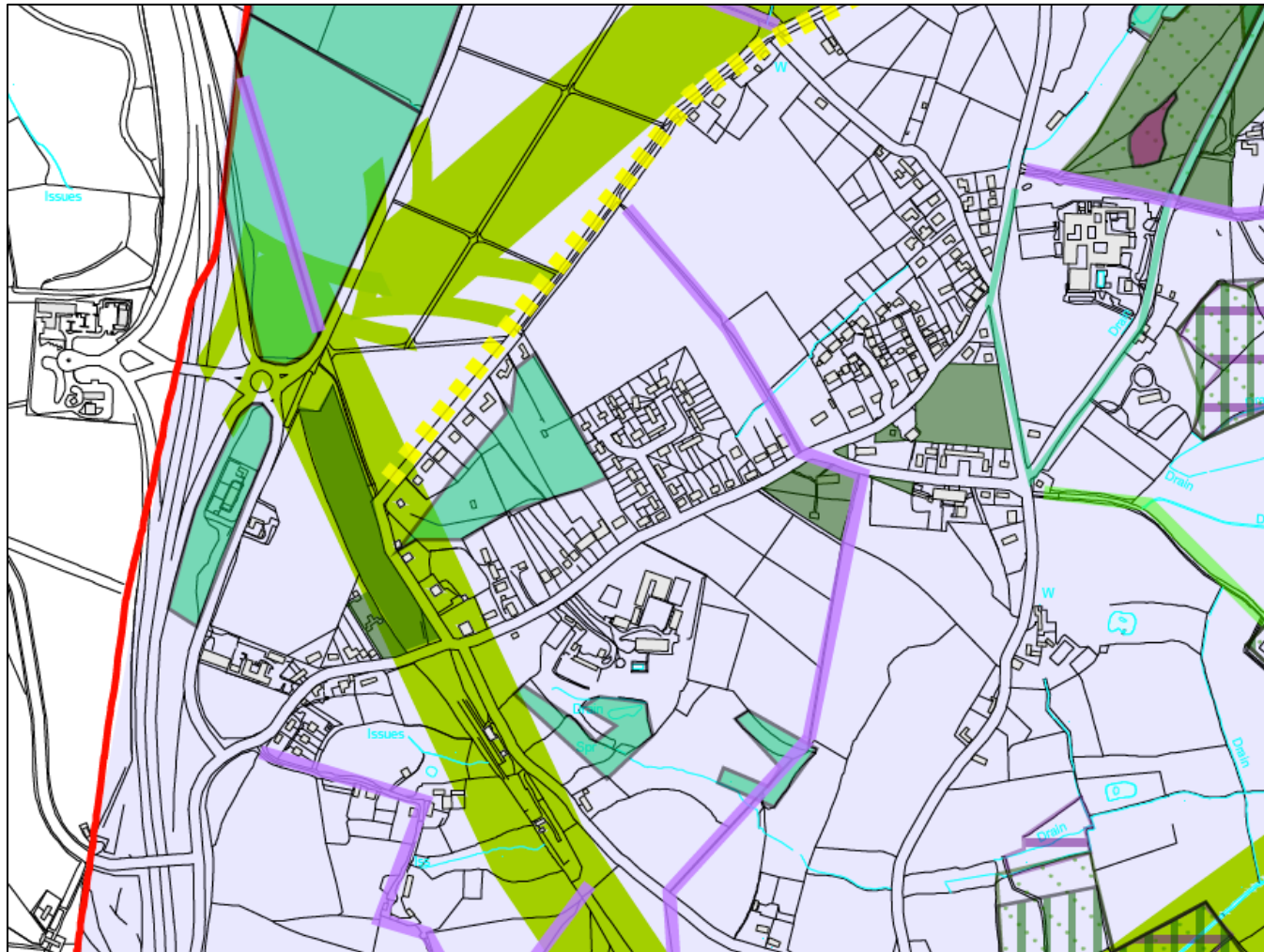
- Statutory Designations**
- Site of Special Scientific Interest
- Other Designations**
- Sites of Importance for Nature Conservation

- Priority Habitats**
- Woodland**
- Ancient and semi-natural
- Ancient replanted
- Lowland Mixed Deciduous Woodland
- Wet Woodland
- Woodpasture and Parkland BAP
- Grassland**
- Lowland Dry Acid Grassland
- Coastal and floodplain grazing marsh
- Purple Moor Grass and Rush Pastures
- Lowland calcareous
- Heathland**
- Lowland Heathland
- Other Important Assets**
- Streams and Ponds
- Multi-functional green space
- Movement**
- Public Rights of Way - Footpath
- Public Rights of Way - Bridleway
- Byway open to all traffic

- Enhancement Opportunities**
- East Woodhay Biodiversity Opportunity Area
- Green Corridors

- 1. Enborne River (E6)
- 2. Burghclere Brook - Hockleys Hole to Enborne (E2)
- 3. Ladle Hill, Great Litchfield Down to Thorndown Copse (E9)
- 4. Ladle Hill to Ware Copse
- 5. Disused Railway Line
- 6. Highclere Park, Herbert Plantation to Crambow Gully
- 7. Ridgemoor Farm to Burghclere Brook
- 8. Batts Copse to Frith Copse & Durrel's Copse
- 9. Herbert Plantation to Burghclere Brook

- (E#) Connects with Echchinswell Neighbourhood Plan Green Corridors



Ordnance Survey, (c) Crown Copyright 2018. All rights reserved. Licence number 100022432

Burghclere Village Green and Blue Infrastructure Network Inset Map - Key on Main Map