

BURGHCLERE PARISH NEIGHBOURHOOD PLAN

2011 – 2029

As Modified December 2022



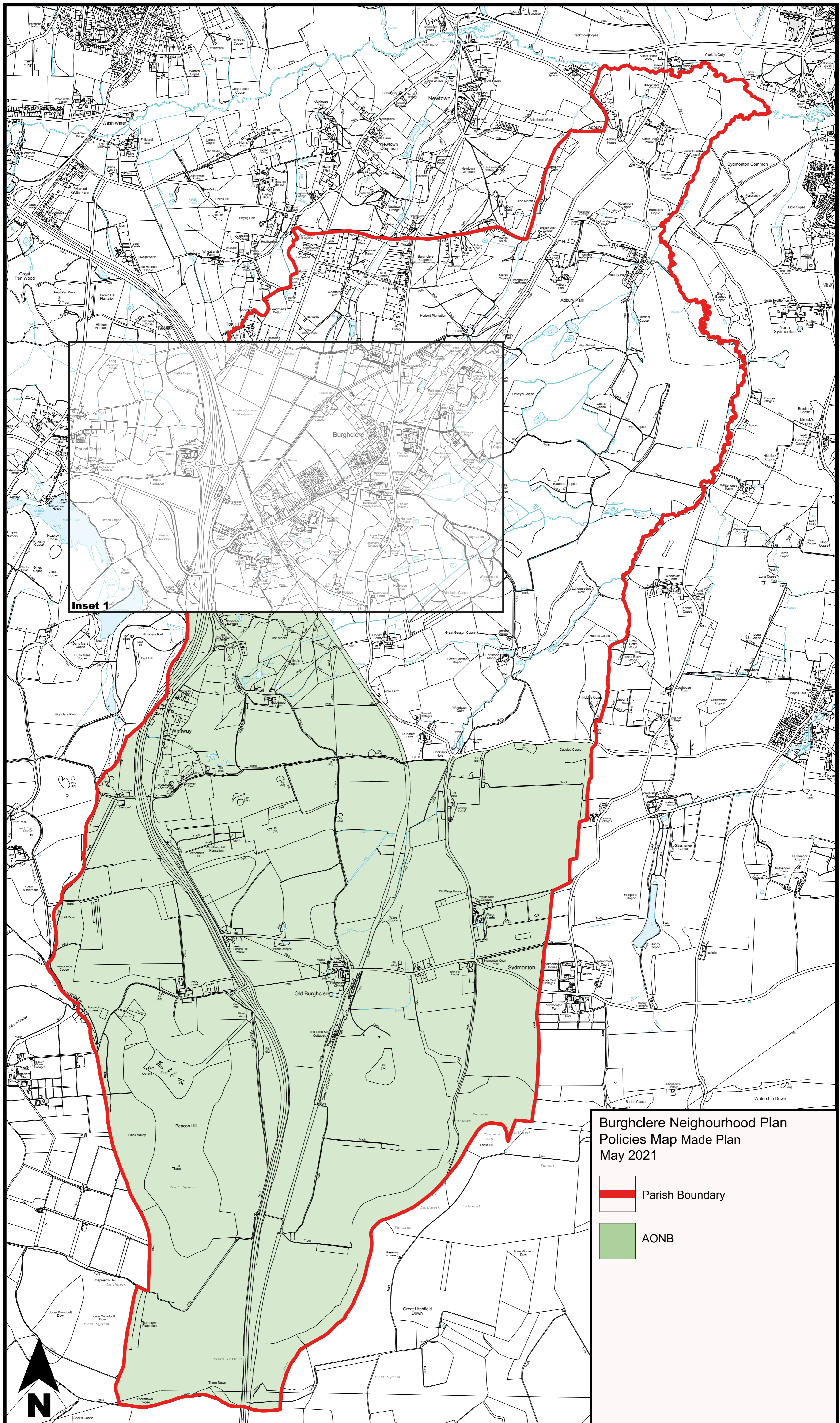
© Richard Carrow

POLICY MAP BOOKLET

Published by Burghclere Parish Council under the Neighbourhood Planning (General) Regulations 2012 (as amended).

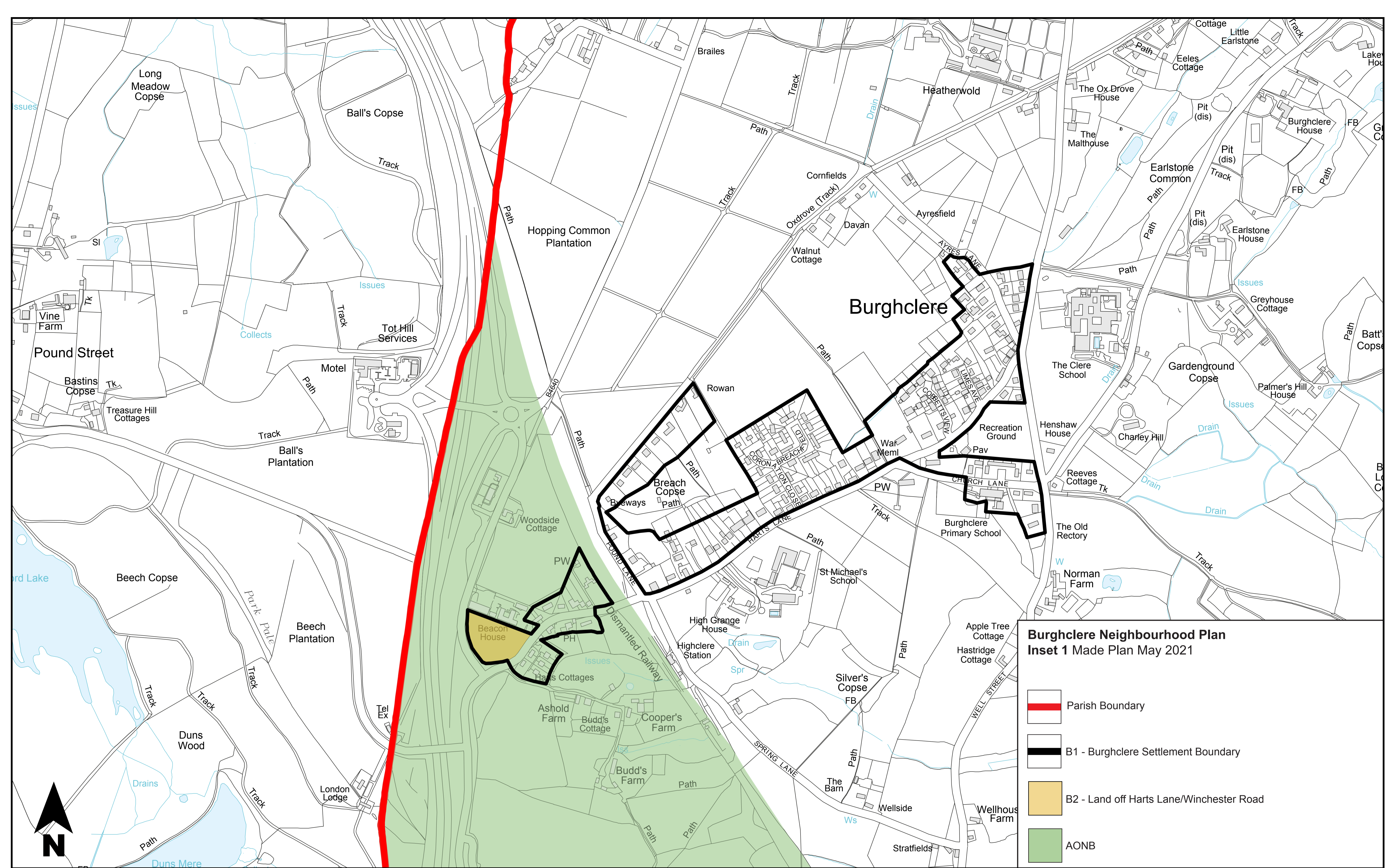


Courtesy of Lottie Baker, Burghclere Primary School

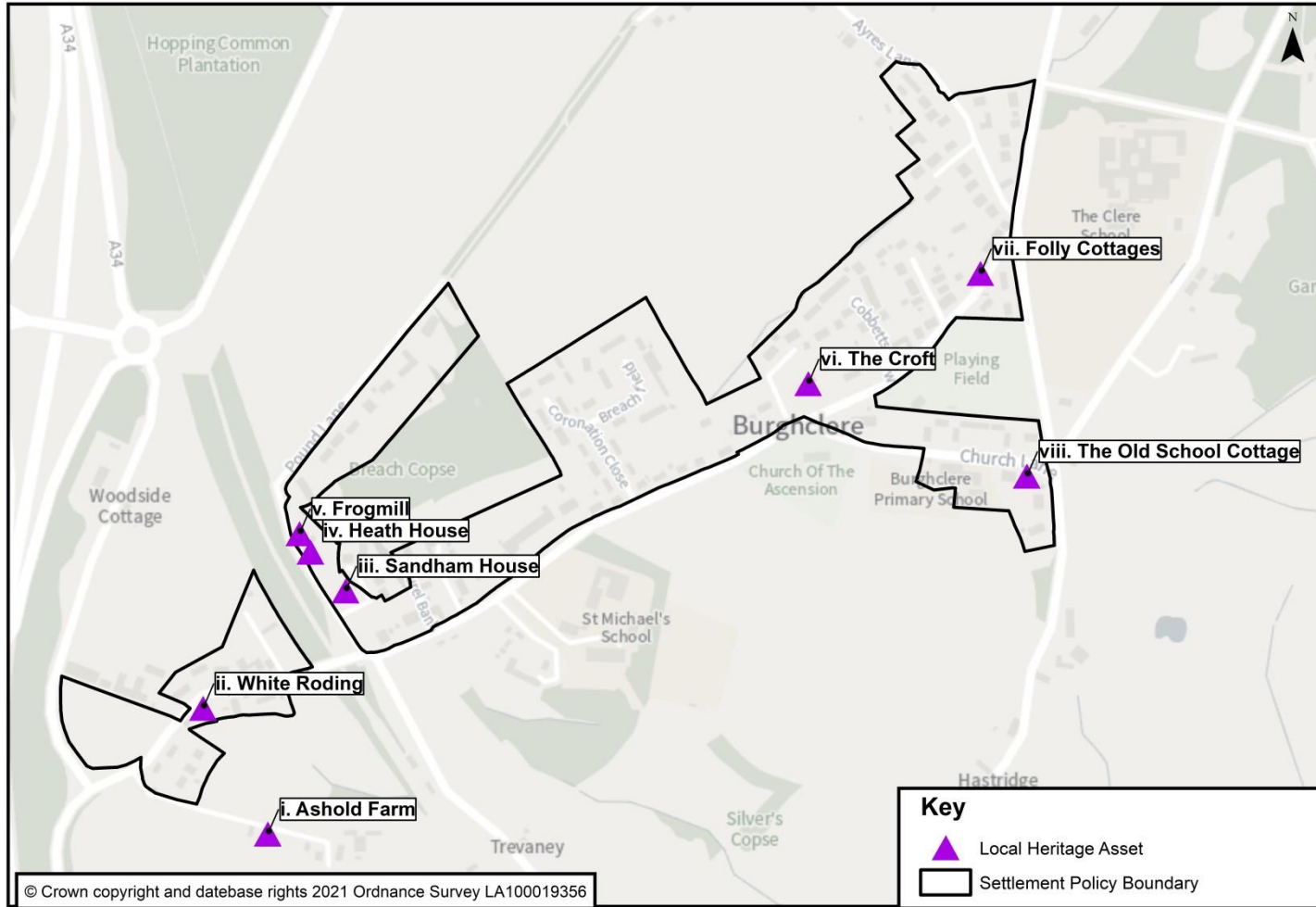


**Burghclere Neighbourhood Plan
Policies Map Made Plan
May 2021**

- Parish Boundary
- AONB

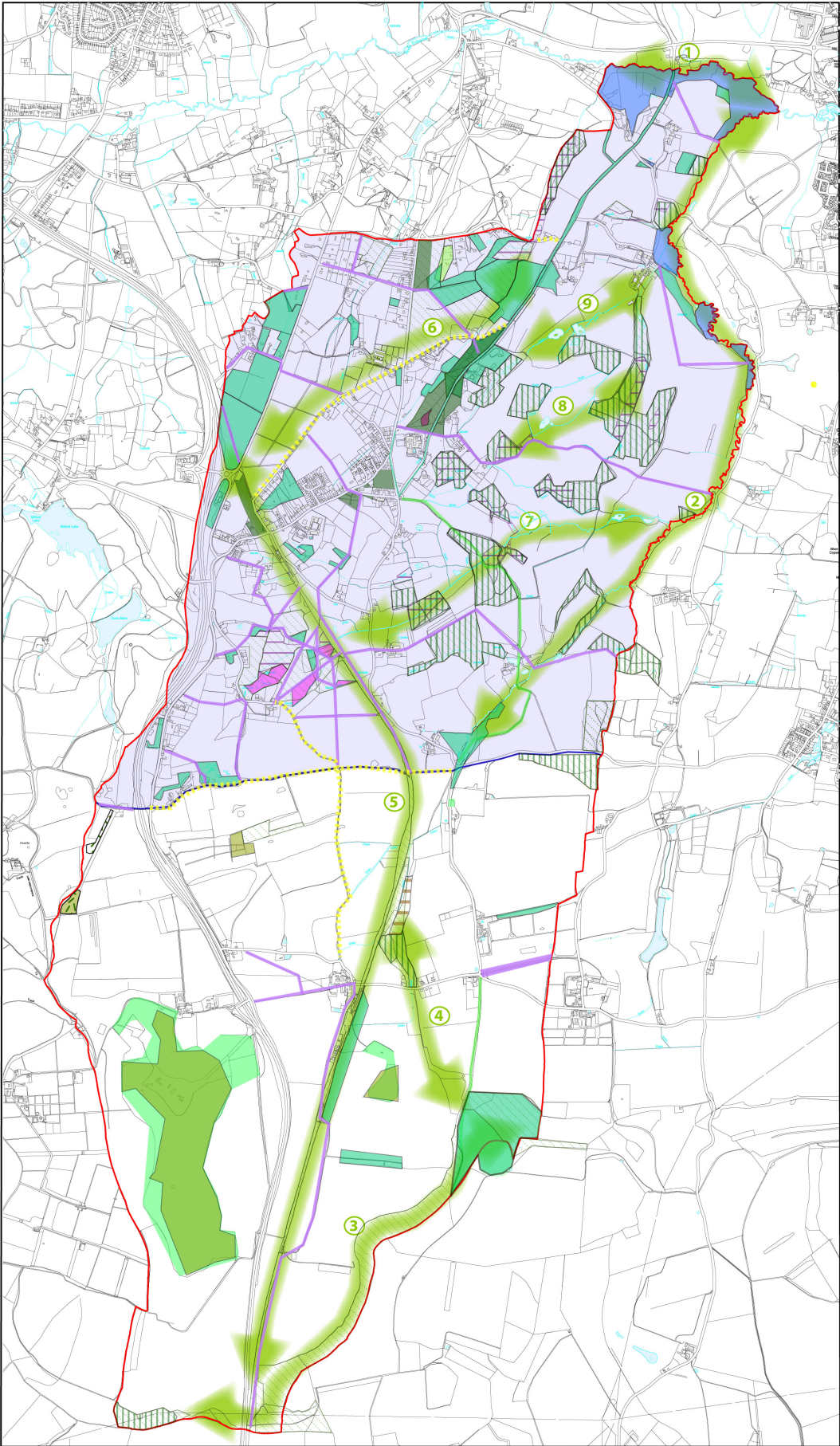


INSET MAP 2



Burghclere Village Local Heritage Assets

Burghclere Neighbourhood Plan Green and Blue Infrastructure Network



- Parish Boundary
- Statutory Designations**
- Site of Special Scientific Interest
- Other Designations**
- Sites of Importance for Nature Conservation

- Priority Habitats**
- Woodland**
- Ancient and semi-natural
- Ancient replanted
- Lowland Mixed Deciduous Woodland
- Wet Woodland
- Woodpasture and Parkland BAP

- Grassland**
- Lowland Dry Acid Grassland
- Coastal and floodplain grazing marsh
- Purple Moor Grass and Rush Pastures
- Lowland calcareous

- Heathland**
- Lowland Heathland

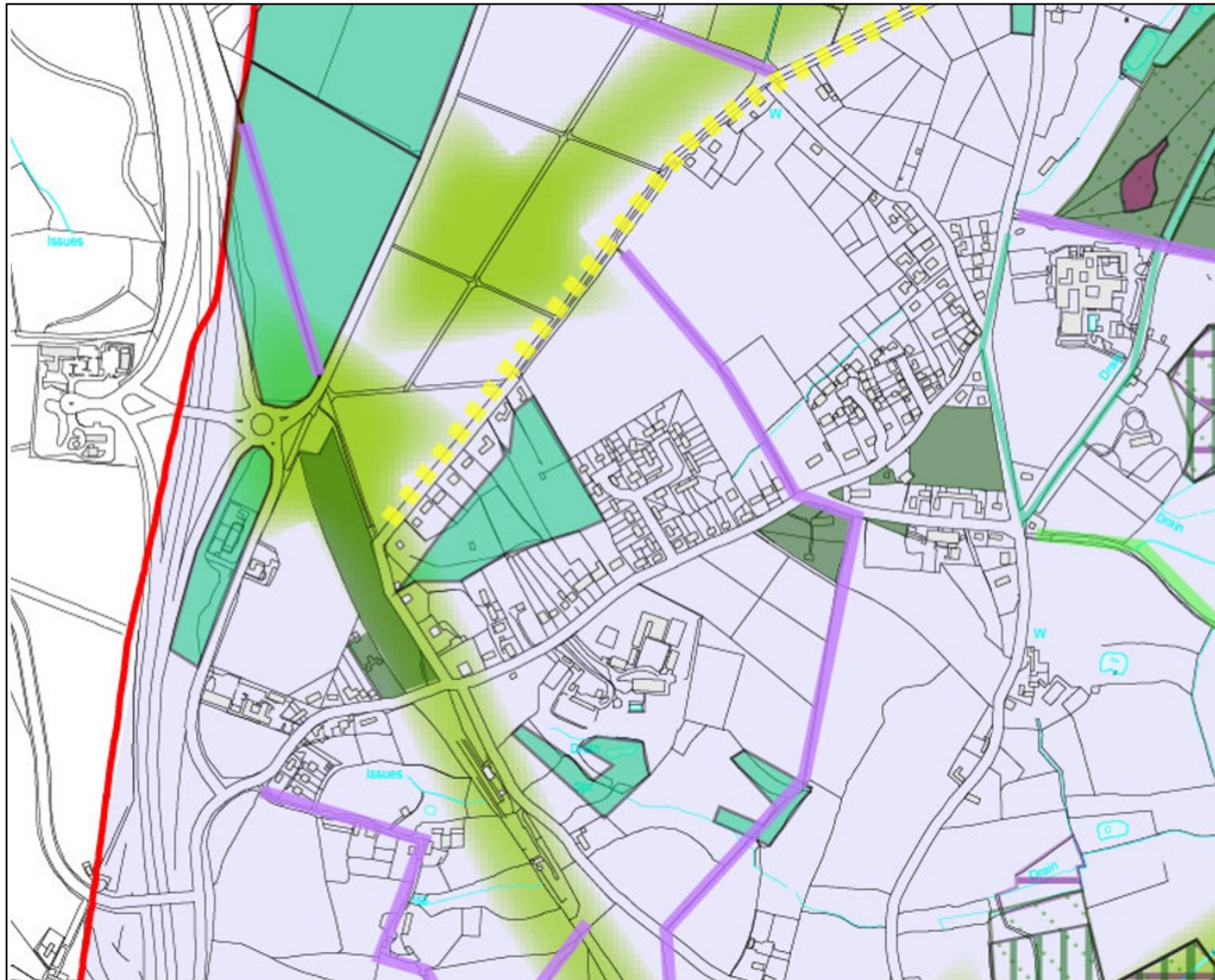
- Other Important Assets**
- Streams and Ponds
- Multi-functional green space

- Movement**
- Public Rights of Way - Footpath
- Public Rights of Way - Bridleway
- Byway open to all traffic

- Enhancement Opportunities**
- East Woodhay Biodiversity Opportunity Area
- Green Corridors

1. Enborne River (E6)
2. Burghclere Brook - Hockleys Hole to Enborne (E2)
3. Ladle Hill, Great Litchfield Down to Thorndown Copse (E9)
4. Ladle Hill to Ware Copse
5. Disused Railway Line
6. Highclere Park, Herbert Plantation to Crambow Gulley
7. Ridgemoor Farm to Burghclere Brook
8. Batts Copse to Frith Copse & Durrel's Copse
9. Herbert Plantation to Burghclere Brook

(E#) Connects with Ecchinswell Neighbourhood Plan Green Corridors



Ordnance Survey, (c) Crown Copyright 2018. All rights reserved. Licence number 100022432

Plan M: Burghclere Village Green and Blue Infrastructure Network Policy Map Inset